



## GPS-Based Mobile Monitoring FOR PORTABLE FLEET MANAGEMENT & LONE WORKER PROTECTION



### In-vehicle while driving; on-person in the field.

The Contigo 7600 is a multi-purpose, portable GPS tracking beacon ideal for a variety of vehicle applications such as fleet management for personally owned vehicles and personnel security including lone worker protection.

The 7600 does not require installation, enabling the device to be moved between fleet vehicles. The device can also be removed from the vehicle and carried on-person by both drivers and lone workers, making it one of the most versatile GPS products on the market today.



### Manage Your Vehicles

**No installation:** The 7600 can be powered from the vehicle's cigarette lighter adapter, eliminating costly and time consuming installations. This also provides the flexibility of transferring the device between vehicles.

**Need to track employee routes?**

Flexible scheduled tracking options and reports provide accountability for personally owned vehicles.

**Need to protect parked vehicles?**

The 7600 has a built-in button to enable an **arm where parked** zone that sends an immediate alert in case of towing or theft.

### Protect Your Workers

The 7600 features a panic button and belt-clip, allowing the device to be worn on-person, providing the ultimate protection for lone workers.

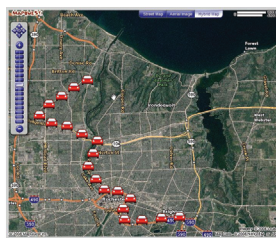
**Ideal for:**

- Home care workers
- Real estate agents
- Security personnel



### Web-Based Monitoring & Real-Time Notifications

Combined with a web-based mobile monitoring system, the 7600 provides key information about vehicles and an unprecedented level of protection for personnel and lone workers.



Log in to the secure web portal to **locate** or **track** your vehicles in real time. View historical reports for:

- Vehicle mileage
- Customer stops & travel time
- Historical routes

**Receive notifications** via email or cell phone for:

- Zone departure and arrival
- Speed alerts
- Panic button alerts
- Low battery alert



There is always the option of having 24/7 third-party alarm monitoring of these events for an even higher level of protection.

In the event of a theft or a critical alarm, item location can be tracked in real-time by monitoring station operators who can use Contigo's location-aware PSAP database to dispatch emergency personnel.

For more information on how Contigo can assist with securing your fleet management or personnel security, please call us at 1-866-477-1767.  
[www.contigo.com](http://www.contigo.com)

Contigo Systems Inc.  
1223 Wilshire Blvd., Suite #524  
Santa Monica, CA 90403-5400

© 2009 Contigo Systems Inc. All rights reserved.

