

GPS-Based Mobile Monitoring FOR COMMERCIAL FLEET MANAGEMENT



Your Business

As a business owner or operator, your bottom line is your first priority. Whether you have 5 or 500 vehicles, you have concerns about:

- safety & security
- productivity
- customer service

In addition, you are concerned about the assets and employees that travel in these vehicles.

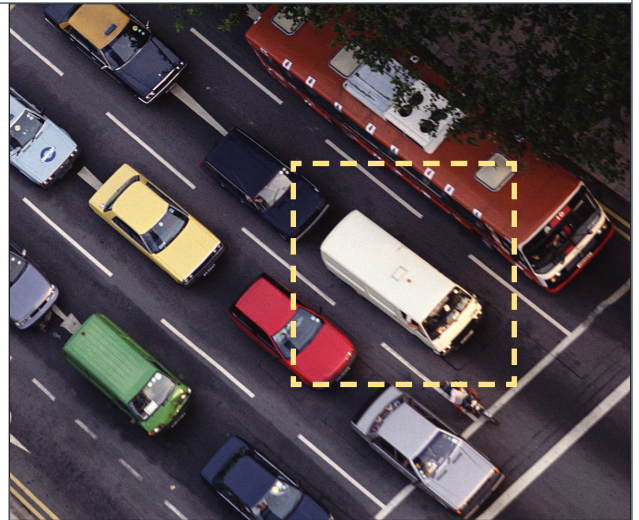
Get Results Quickly

Mobile monitoring using GPS technology provides information on the location and status of your company's vehicles, helping you better manage your mobile resources.

Best of all, the system is completely web-based and extremely user-friendly. That means:

- No computer hardware to purchase
- No software to install
- No extensive training required

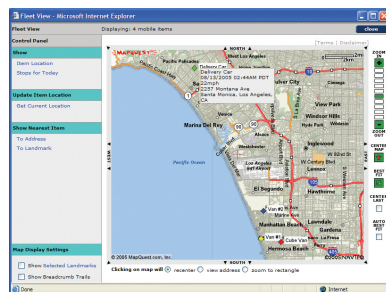
Get started quickly - see results immediately!



View Your Fleet

From a single screen, track the status of your vehicles, including:

- Current location
- Nearest to a particular address
- Nearest to a particular landmark
- "Stops" for the day



Improve customer service by re-routing field personnel on the fly.

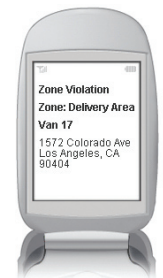
Eliminate on the job moonlighting by reviewing driver route logs.

Reduce operating costs by making sure drivers are taking the best routes between jobs.

Receive Alerts

The system automatically sends alerts via email or to your cell phone for any of the following events:

- Zone entry or departure
- Speed violation
- Panic button activation
- Auxiliary input trigger
- Maintenance due



There is always the option of having 24/7 third-party alarm monitoring of critical events.

Generate Reports

Need information to address a customer billing dispute? Wondering why a particular employee makes less service calls than others? Are you required to file transportation logs on each of your drivers?

Your mobile monitoring system can generate a wide range of reports that provide critical information on fleet activities:

- Stop report
- Stop by Landmark
- Fleet status
- Route log
- Vehicle idle time
- Trip detail
- State by State mileage
- Mileage summary
- Engine hours
- Pending maintenance

The image shows three overlapping screenshots of the GPS-based mobile monitoring software interface. The top screenshot is an 'Event Detail Report' showing a list of events with columns for Date, Time, Location, and Status. The middle screenshot is a 'Trip Detail' report showing a list of trips with columns for Date, Time, Location, and Status. The bottom screenshot is a 'Stop by Landmark' report showing a list of stops with columns for Date, Time, Location, and Status.

Report data is available online, and can be exported for use in Excel and other programs. Key reports can also be scheduled for automatic delivery via email in a variety of formats, including PDF.

Regardless of how you use the system, you are now equipped with location and status information about your fleet that is important to you.

Return on Investment

Managing your vehicles and people more efficiently will increase profitability and reduce operating costs. See a payback on your investment within months.

ANNUAL SAVINGS	
SAFETY & SECURITY	
• Save 10% on comprehensive vehicle insurance	\$100
• Recover stolen asset (save deductible)	\$500
PRODUCTIVITY	
• Reduce overtime by 15 minutes	\$1,400
• Decrease unauthorized driving	\$940
CUSTOMER SERVICE	
• Sell one 'same day' delivery a week for \$50	\$2,500
• Collect on previously unbillable work	\$1,500
TOTAL ANNUAL SAVINGS PER VEHICLE	\$6,940
INVESTMENT PAYBACK	1.5 months

With results like these, can your business afford not to be using a GPS-based mobile monitoring system?



Testimonial

"We installed a GPS unit into all of our delivery vans and discovered that a few of the drivers were taking long lunches every day. Some were even using the vans on the weekends for personal business. The mobile monitoring system helped us correct this problem quickly, paying for itself almost immediately."

—General Manager, Delivery company

For more information on how we can help improve the management of your commercial fleet, please contact us:

