

# GPS-Based Mobile Monitoring FOR THE EDUCATION INDUSTRY



## Security Gap

Child safety while on school grounds is a subject that has received much attention and resources. An equally important – but less addressed – matter is the safety and security of children as they are transported to and from school.

Recent events involving misrouted buses and youth violence have created serious concerns with parents. In addition, drivers have begun to voice their own safety concerns as they bear the responsibility of driving the vehicle safely while monitoring the activities going on behind them. How can we extend the security infrastructure between the school and the home in light of current fiscal realities?

## The Solution

The education industry's answer is remote vehicle monitoring. By combining GPS with wireless communications networks, school personnel are given unprecedented access to location and status information about buses and school vehicles 24 hours a day, 7 days a week via a secure web interface.

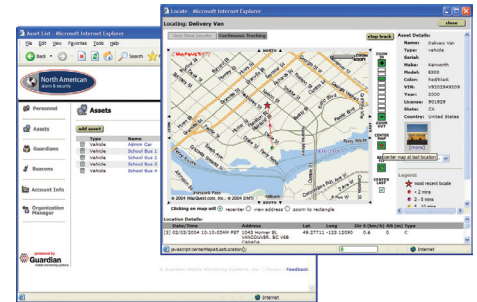
In addition, vehicles equipped with a beacon (wireless locatable device) come with the following:

- Panic button notification
- Speed alarm monitoring
- Allowed & disallowed zone creation

From an operational perspective, the system has been designed for the resource constrained manager who has limited funds and even less time. The system:

- Requires no additional computers/staff
- Is easy to use – little to no training required
- Offers 24/7 professional security monitoring from a trusted provider

Whether you are an administrator, driver or parent, mobile monitoring is a fiscally prudent solution that will provide tremendous peace of mind every community demands.



## Key Features and Benefits

Feature	Description
Location	Quickly, easily, and securely locate or track vehicles via any web browser.
Last-Valid Locate	Provides probable present location, even when GPS signals are blocked.
Speed Monitoring	Receive alerts if vehicle exceeds a set speed limit or threshold.
Zones	Create an allowed or disallowed perimeter and receive notifications if the zone is violated. Can be created in seconds via the web interface.
Built-In Backup Battery	Provides emergency power if the vehicle battery is disconnected or drained.
Panic Button	Sends an alert to a monitoring station or other selected personnel for emergency response.

For more information on how we can assist your vehicle monitoring needs, please contact us: