

# GPS-Based Mobile Monitoring FOR EQUIPMENT & OUTDOOR ASSETS



## Does Mobile = Missing?

Do you worry that when you go home at night, your valuable equipment or assets won't be there the next day?

- Lumber
- Tools
- Flooring
- Equipment
- Home Appliances
- Conduit

If it's valuable and left outdoors, it's at risk of being stolen. And while you've thought about hiring security guards or installing video cameras, those are expensive options and are only partially helpful in preventing theft.

## Portable GPS

Now imagine those same valuable assets could be armed with a GPS beacon that is:

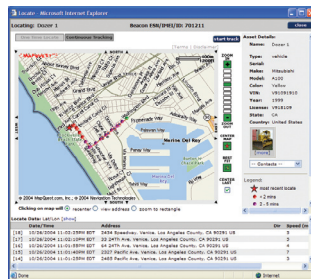
- **Locatable nationwide**
- **Motion** activated
- **Battery-operated** for up to 90 days (on 4 AA batteries)
- **Portable** to eliminate the need for installation
- **Weather resistant** for extreme environments
- **Small** for effective concealment
- **Cost-effective** for any asset

You can use a beacon on each asset, or simply use a few and swap them between assets as needed.

It's simple and easy to do.



## Security & Peace of Mind



Combined with a web-based mobile monitoring system, these battery-operated GPS beacons will provide an unprecedented level of security for your equipment or assets.

From any web-based terminal, log-in to your secure portal to review the last reported location of any of your assets or review historical reports about asset activity.

You can also configure the beacon to generate reports based on a set schedule or alerts that can go to your cell phone or email such as:

- Motion Alert (when a stationary beacon initially moves)
- Zone Alert (when a beacon reports while outside an allowed zone)
- Low Battery Alert (when the beacon's batteries need to be changed)

There is always the option of having 24/7 alarm monitoring of these events.



**Motion activated. Extended battery life. Automated alerts.**

**Making Security Mobile™**

For more information on how to secure your equipment and outdoor assets, please contact us:

